

## 1. GENERAL

Casing end seal for the sealing of the gap between carrier pipe and the casing in pipeline crossings.

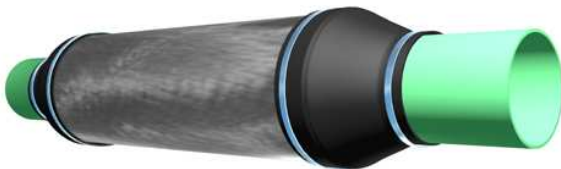
### Range

DN carrier pipe [mm]	DN casing pipe [mm]
25 - 1300	37,5 - 2000

## 2. INSTALLATION

### CLOSED VERSION

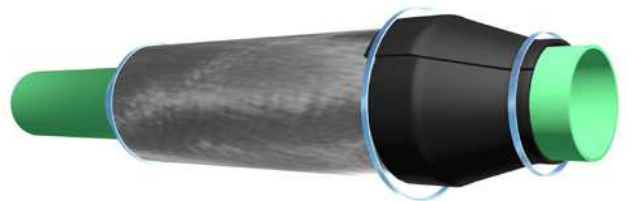
Prior to installing carrier pipe into casing slide End Seal loosely onto carrier pipe (insertion side) making sure to have large size of end seal facing toward casing pipe.



1. Prepare outside surfaces by removing dirt from casing and carrier pipe.
2. After carrier pipe is inserted into casing, slide small end of end seal over the carrier pipe with stainless steel banding clamp. Large end should face casing.
3. Position large end of end seal over the casing pipe.
4. Position banding clamp approximately 1" from the end of the casing pipe and then tighten onto the end seal.
5. Fold end seal in an S shape so it will extend into the casing.
6. Position banding clamp approximately 1" from the end of the end seal on the carrier pipe and then tighten. (Make sure the end seal is folded into the casing, to relieve stress during backfilling and allow for expansion and contraction movement.)
7. Repeat steps 1, & 3 - 6 on other end of casing.

### OPEN VERSION

This version can be applied when carrying pipe is already inserted on the casing pipe.



1. Prepare outside surfaces by removing dirt from casing and carrier pipe.
2. Wrap end seal around carrier pipe and casing pipe, make sure the widest portion of the end seal gets wrapped around the casing pipe.
3. Next to where the extremities wrap, apply on the external part of the end seal a layer of adhesive, after removing dirt, and overlap the other end pressing firmly.
4. Position banding clamp approximately 1" from the end of the casing pipe and then tighten onto the end seal.
5. Fold end seal in an S shape so it will extend into the casing.
6. Position banding clamp approximately 1" from the end of the end seal on the carrier pipe and then tighten. (Make sure the end seal is folded into the casing, to relieve stress during backfilling and allow for expansion and contraction movement.)
7. Repeat steps (1-6) on other end of casing .