

- Cold application;
- Excellent dielectric strength;
- Good deformability
- Good mechanical protection;
- Self- amalgamating tape.

DESCRIPTION

Self-adhesive anti-corrosion tape, made of butyl compound with incorporate primer spreaded on a low density polyethylene film of 130 µm thickness.

The tape is designed for anticorrosion and dielectric protection of buried steel pipes and tanks were needed a good mechanical protection and fast application of the coating.

This butyl tape ensures an excellent resistance to pipelines at high temperatures service.

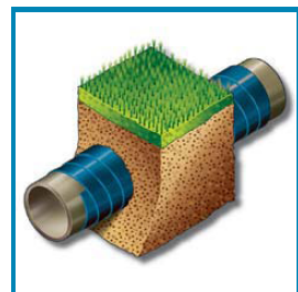
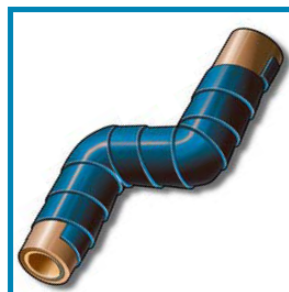
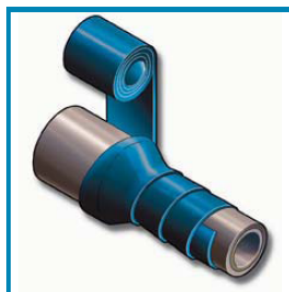
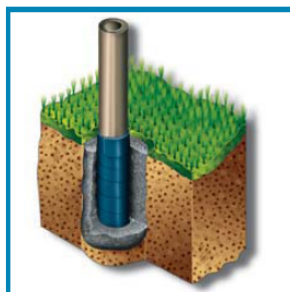


TIPICAL APPLICATIONS

- Anticorrosion and dielectric coating for buried steel pipes;
- Refurbish of dielectric and mechanical characteristics in correspondence to welding of pipes to be buried.
- Anticorrosion coating after maintenance services on buried steel pipelines.

TECHNICAL FEATURES

Properties	Standard	u.m.	Value
Total thickness	ASTM D 1000	mm	1.5
LDPE film thickness	-	µm	130
Compound thickness	-	mm	1.37
Adhesion (to steel 90°)	ASTM D 1000	N	40.2
Dielectric strength	UNI 4291	KV/mm	13.5
Residual thickness after impact (double layer application)	DIN 30672/I	mm	1.6
Tensile strength	DIN 30672/I	N/10mm	39
Elongation at break	DIN 30672/I	%	450
Working temperature	-	°C	-40 ÷ +100
Application temperature	-	°C	+0 ÷ +50
Stocking temperature	-	°C	+5 ÷ +40





ESPANSIT I

Butyl tape model 14003/ESPANSIT

APPLICATION

Surface preparing

- Remove dirt, grease, dust. The surface has to be dry.
- Mechanical cleaning by metal brush is required.

Instruction for application

- Wrap the tape by constant force, stretching in order to avoid wrinkles;
- Proceed by a 50% overlapping.

STORAGE

Correct storage: dry and covered place, temperatures between +5°C and +40°C.

PACKAGING

Standard length	10 m
Standard height	50mm – 100 mm

Other length and height on demand.

Rolls individually packed into plastic heat shrinkable wrap, put in carton boxes.

PRECAUTIONS AND SAFETY SUGGESTIONS

The tape is not dangerous for normal use, and if used by skilled workers.

It is possible - in particular occasion - to cut or injure yourself.

Keep out from reach of children.

For further information kindly refer to safety data sheet.